

SHOW ME YOUR ARTISTIC SIDE

Name _____

Finish the Picture!

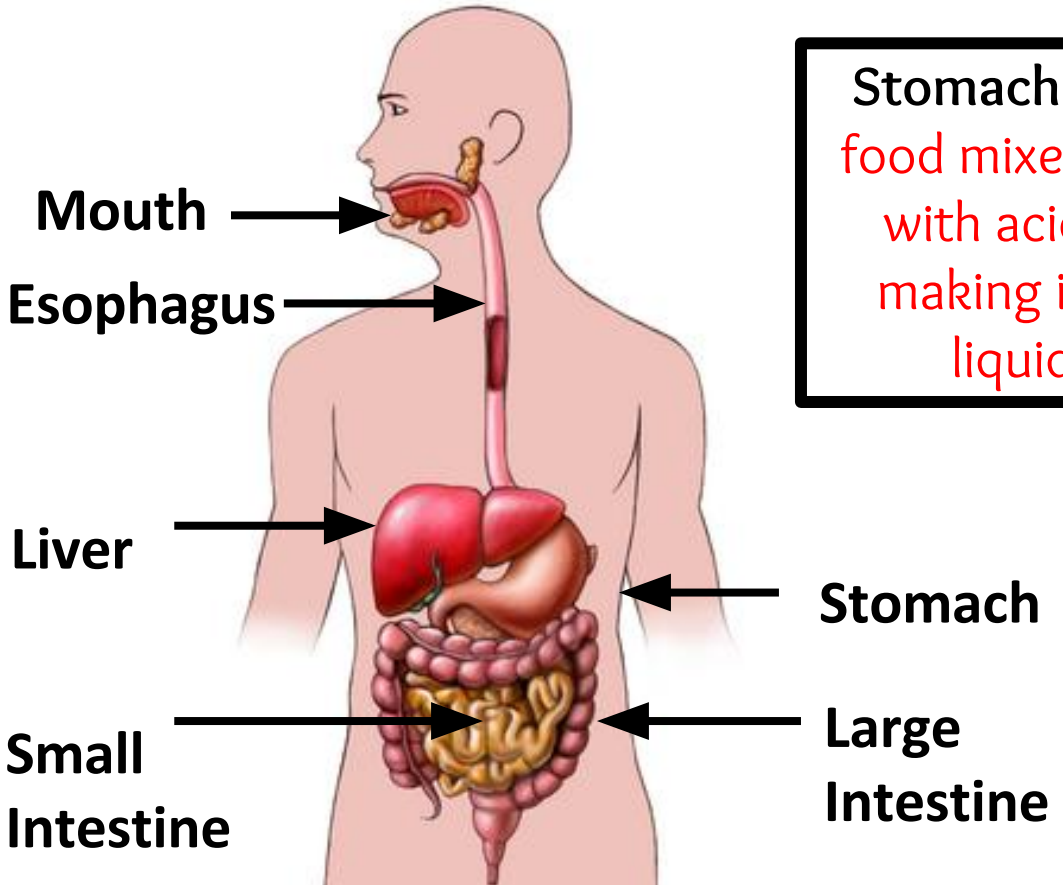
Directions: Use a pencil to draw the rest of the picture.



Digestive System Notes

Mouth - saliva breaks down food into small pieces.

Esophagus – stretchy tube moving food to stomach.



Stomach - food mixes with acid making it liquid.

Small intestine - absorbs nutrients into the blood.

Liver - stores vitamins and uses sugar for energy.

Large intestine - unused parts of food passes from the body.



The Human Digestive System

Use the words in the box to fill in the blanks. Each word is used once.

~~absorbed~~

~~esophagus~~

~~mouth~~

~~swallow~~

~~acid~~

~~food~~

~~saliva~~

~~system~~

~~chewed~~

~~intestine~~

~~stomach~~

~~tongue~~

~~digestion~~

~~liquids~~

~~small~~

~~waste~~

~~energy~~

~~liver~~

All animals need to eat **(1) _ o _ d** to get **(2) _ _ e r _ y** to live. But in order to use this food, they have to break it down in a process called **(3) d _ g _ _ t _ _ _**. And so, all animals have a group of connected organs called the digestive **(4) _ y _ _ e _**.

In humans, the process of digestion begins in the **(5) _ o _ _ _ _** where food is **(6) c _ _ _ _ _ d** into small pieces by the teeth. The **(7) _ _ n _ u _** helps by moving these pieces around. These pieces are covered by **(8) _ a l _ _ _ _**, or spit. The saliva makes the food slippery so that it is easier to **(9) _ _ a _ l _ _ _**. It also helps to break down the food.

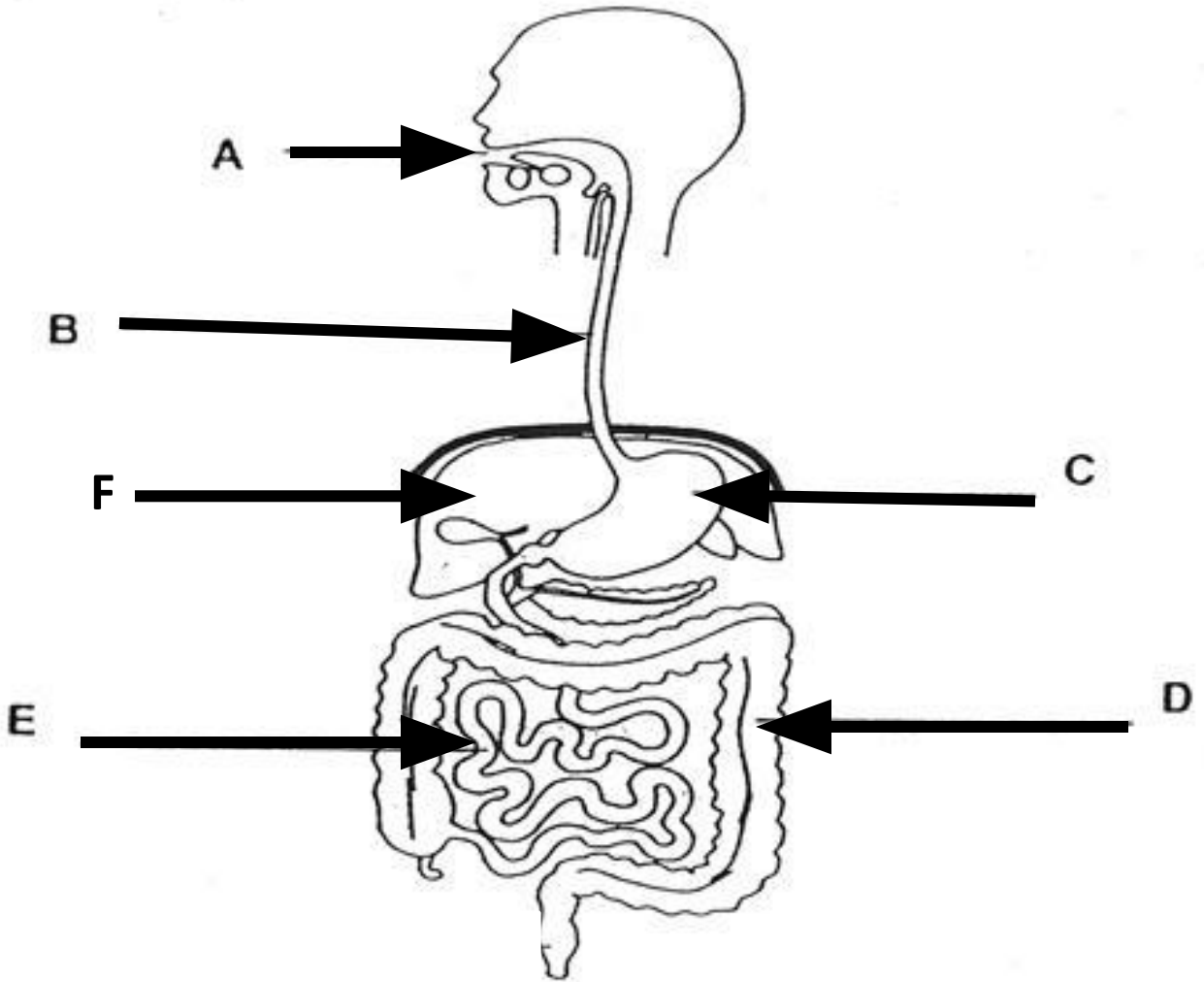
After being swallowed, food passes into the **(10) e s _ _ _ _ _ s**. Then, it goes down the esophagus, into the **(11) _ _ o _ _ _ h**. Once in the stomach, the food is mixed with **(12) _ _ i _ _** and gets crushed some more.

After time in the stomach, food passes into the **(13) _ m _ _ _ _** intestine where nutrients get **(14) a _ _ _ _ r _ _ _ _**. The organ called the **(15) _ i _ _ r** helps by producing some digestive juices called bile. Next, the remaining particles not absorbed goes into the large **(16) _ _ t _ _ t _ _ _** where the **(17) _ _ q _ _ _ s** are absorbed. The remaining food is called **(18) w _ _ _ _ _**, where it waits before leaving the body.

Color and Label

Directions: First, label the body parts. Second, color each body part according to the designated color. Third, put the letter in the blank below to identify the definition.

Large intestine – green Small intestine – red Liver – yellow
Stomach – blue Mouth – purple Esophagus - orange



1. _____ This absorbs nutrients from the food into the blood stream.
2. _____ In this body part, food mixes with acid breaking it down into a liquid mixture.
3. _____ Saliva breaks down food into small pieces, which helps food get swallowed.
4. _____ A stretchy, long pipe that moves food into your stomach.
5. _____ All the unused parts of food passes from the body through this.
6. _____ This helps store certain vitamins and use a type of sugar your body uses for energy.

Name _____

Date _____

Digestive Disarray



Oh no! Maya's little sister tore up Maya's notes about the digestive system. Help Maya get her notes in order before her big test. Cut out each piece. Match each system part to its job description and length. Then glue the pieces together correctly on another sheet of paper.

This organ mixes food with acid. Enzymes and digestive juice break down food here.

13 feet

three inches

six inches



large intestine



esophagus

This organ continues to use enzymes to digest food. Its walls absorb digested nutrients into the body.

This organ absorbs water and minerals. It stores waste to be removed from the body.

This brings food into the body.

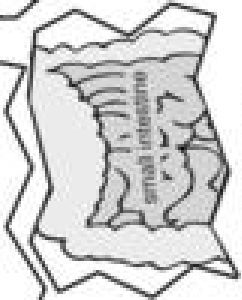
four feet

This muscular tube moves food into the stomach.

mouth

stomach

ten inches

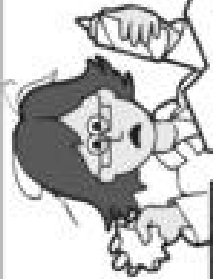


small intestine

Name _____

Date _____

Digestive Disarray



Oh no! Maya's little sister tore up Maya's notes about the digestive system. Help Maya get her notes in order before her big test. Cut out each piece. Match each system part to its job description and length. Then glue the pieces together correctly on another sheet of paper.

This organ mixes food with acid. Enzymes and digestive juice break down food here.

13 feet

three inches

six inches



large intestine



esophagus

This organ continues to use enzymes to digest food. Its walls absorb digested nutrients into the body.

This organ absorbs water and minerals. It stores waste to be removed from the body.

This brings food into the body.

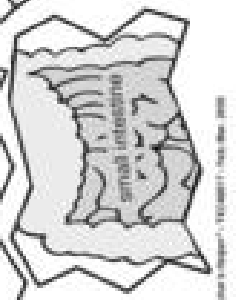
four feet

This muscular tube moves food into the stomach.

mouth

stomach

ten inches



small intestine